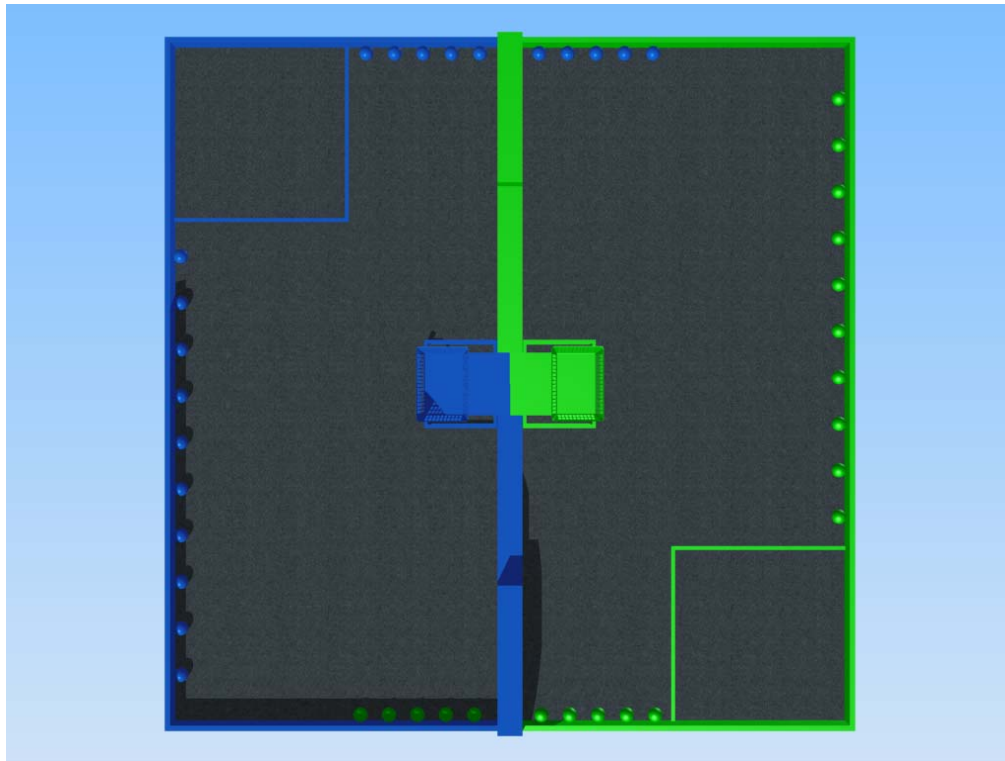


Section

**1**



# The Arena



## 1.1 – Overview

The playing field is a square field in which the robots compete. Square shaped starting boxes are placed in the corners of the field.

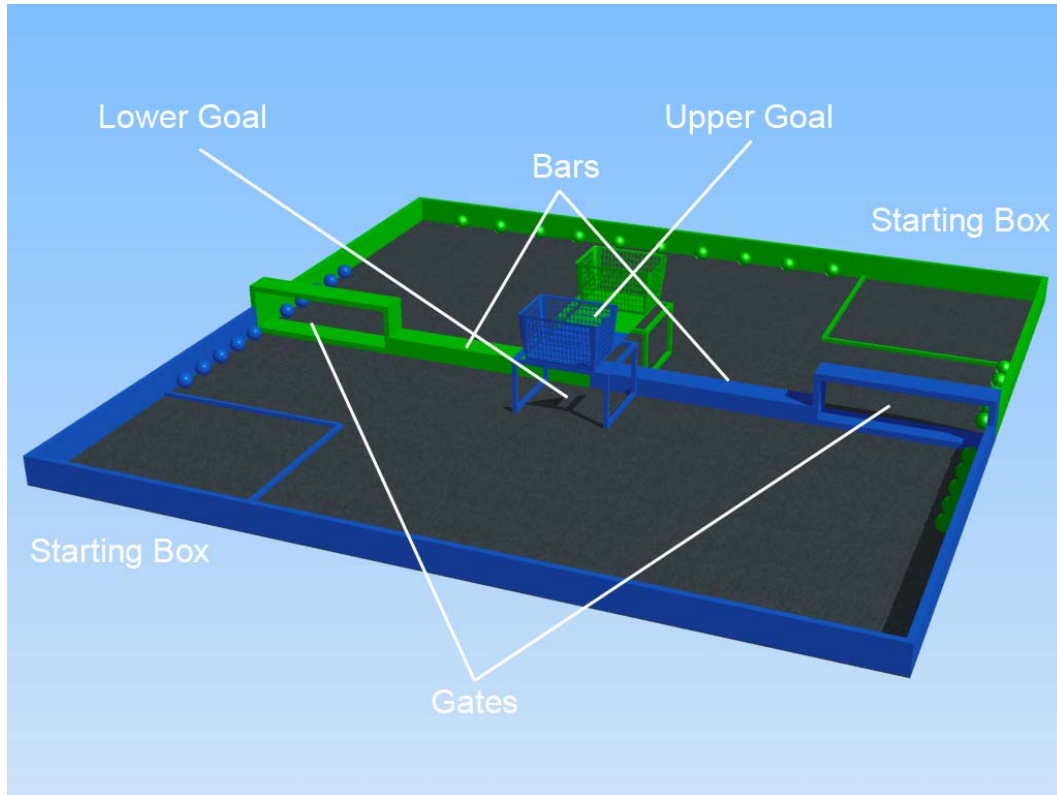
The Playing Field is put together using wood screws and painted blue and green to designate teams.

## 1.2 – The Playing Field

### 1.2.1 Boundaries and Markings.

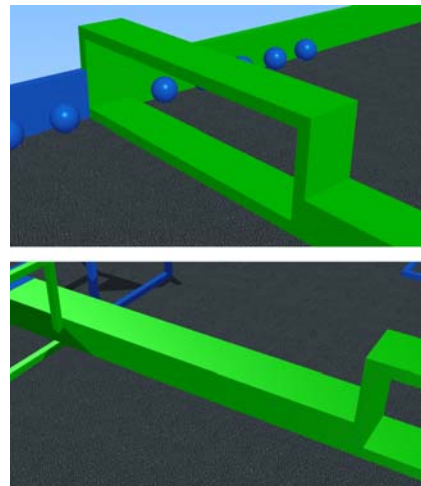
The carpeted Playing Field is 9 feet by 9 feet surrounded by 2x4's on all sides.

2 ends of the field (painted blue and green) are the Team station walls. In the corners of the field there is a blue starting box and green starting box marked with the corresponding colored tape. Each Starting box is approximately 20 inches by 20 inches.



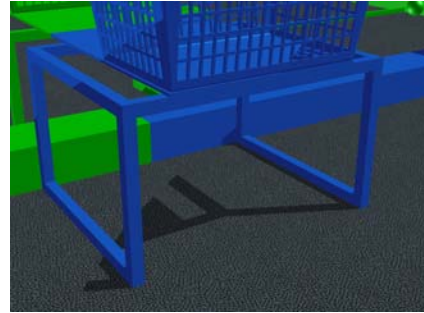
### 1.2.2 The Barrier

The Barrier divides the Playing Field in half. It consists of “the gate” and “the bar”. Robots may go under and through the gates or up and over the bars. The bar is approximately 2-3/4 inches high.



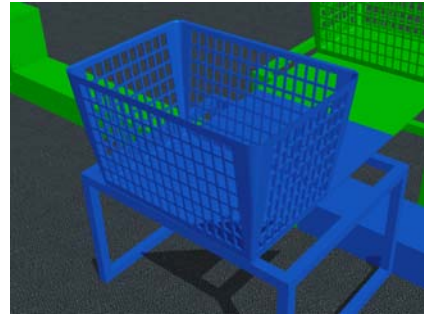
### 1.2.3 Lower Goals

At the center of field there are 2 lower goals, one for the blue team and one for the green team. The opening is approximately 6 inches tall and 9 inches wide. A bump is placed in opening of the goal to help keep balls inside the goal.



#### **1.2.4 Upper Goals**

Directly above the lower goals are the upper goals. These are made out of baskets with an opening of approximately 9 inches by 6 inches and a height of 6 inches. The upper goals are Velcroed to a wooden platform on top of the lower goal.



#### **1.3 – Scoring Objects**

The game is played with regulation size racquetballs. Each team is given 20 balls to score with, 15 on their own side and 5 on the other, of a total of 40 balls on the field. The balls are positioned about an inch away from the walls.